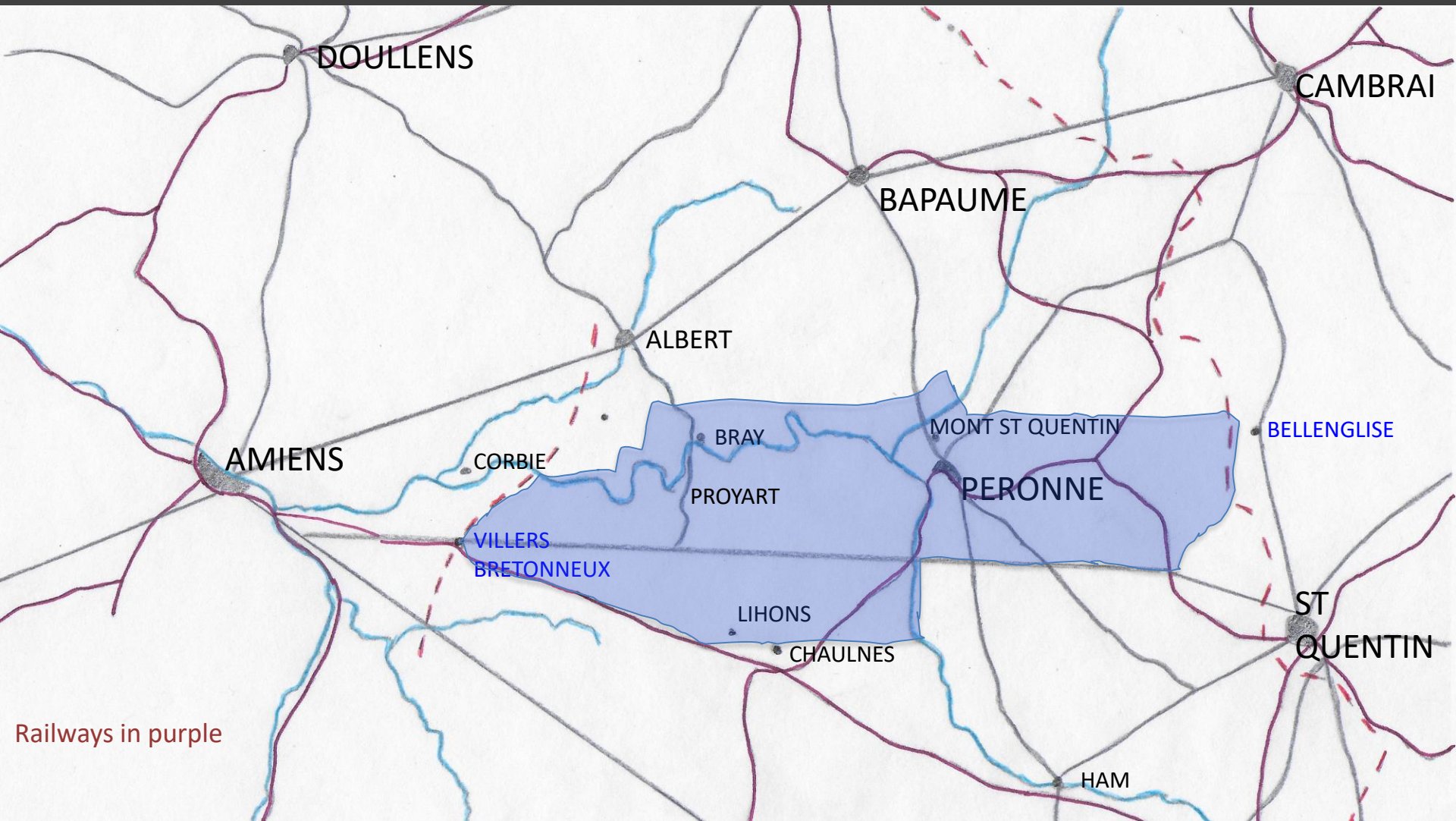


THE AMIENS OFFENSIVE



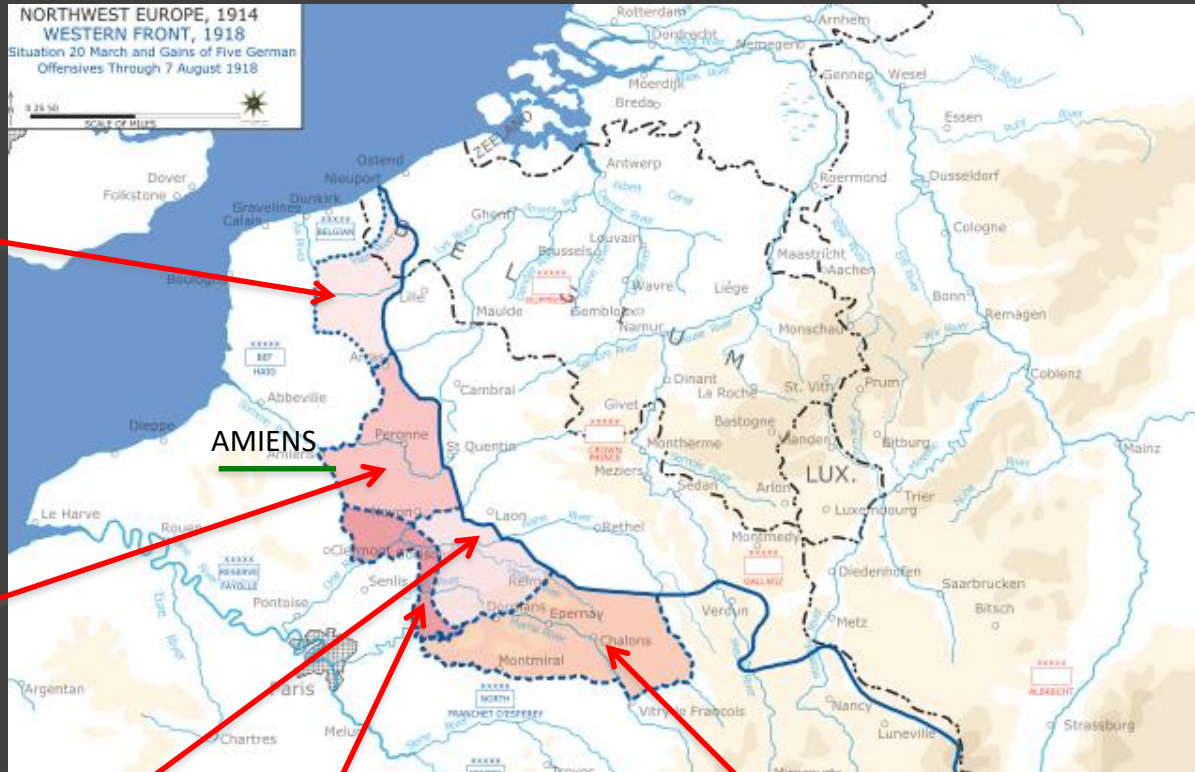
AUSTRALIAN CORPS ADVANCE 8 AUGUST - 17 SEPTEMBER



Railways in purple

← 60 KILOMETRES →

FIVE GERMAN OFFENSIVES, 1918



(2)
GEORGETTE,
9-29 APRIL

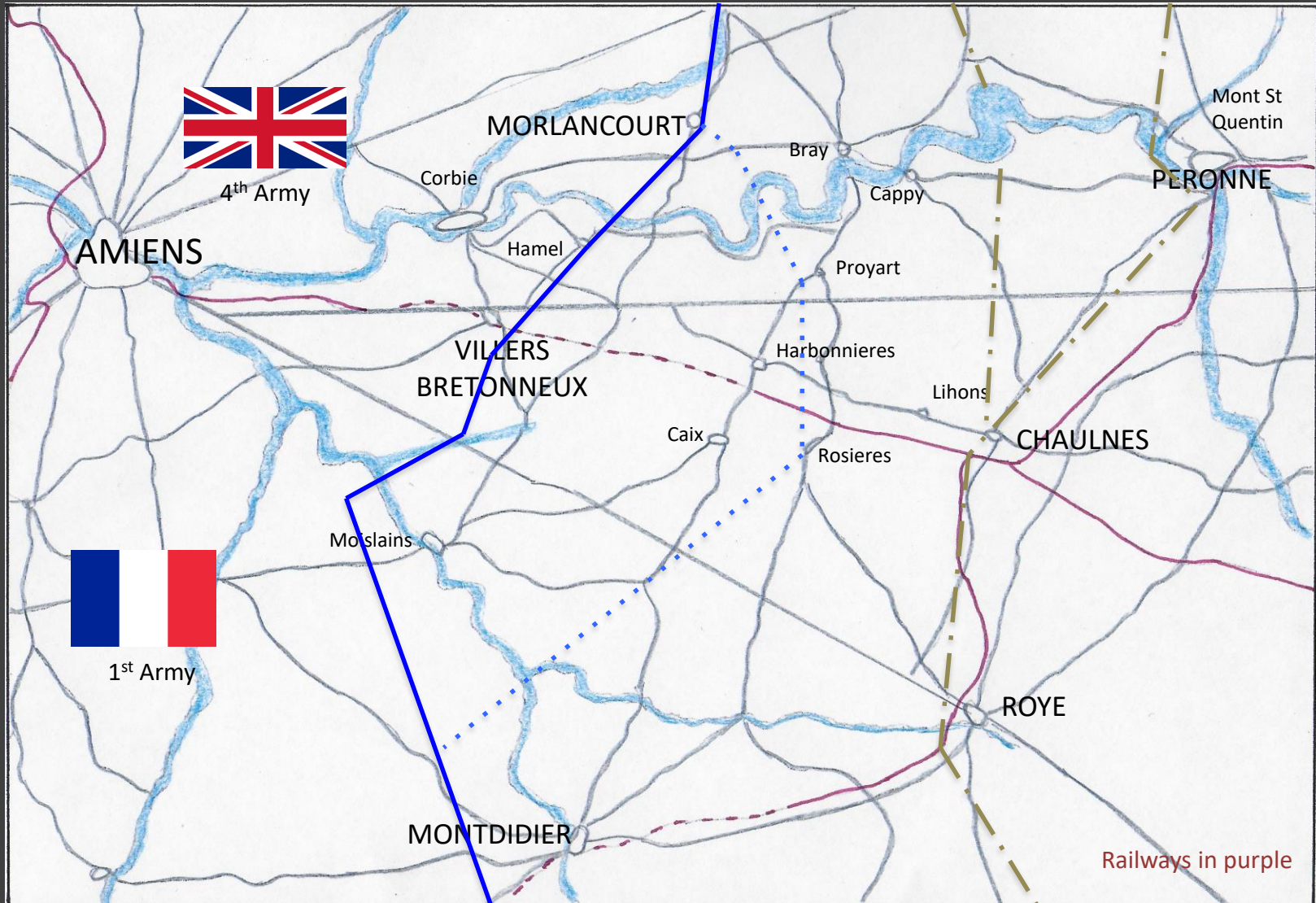
(1)
MICHAEL,
21 MARCH -
18 APRIL

(3)
BLÜCHER/Y
ORCK,
27 MAY - 4
JUNE

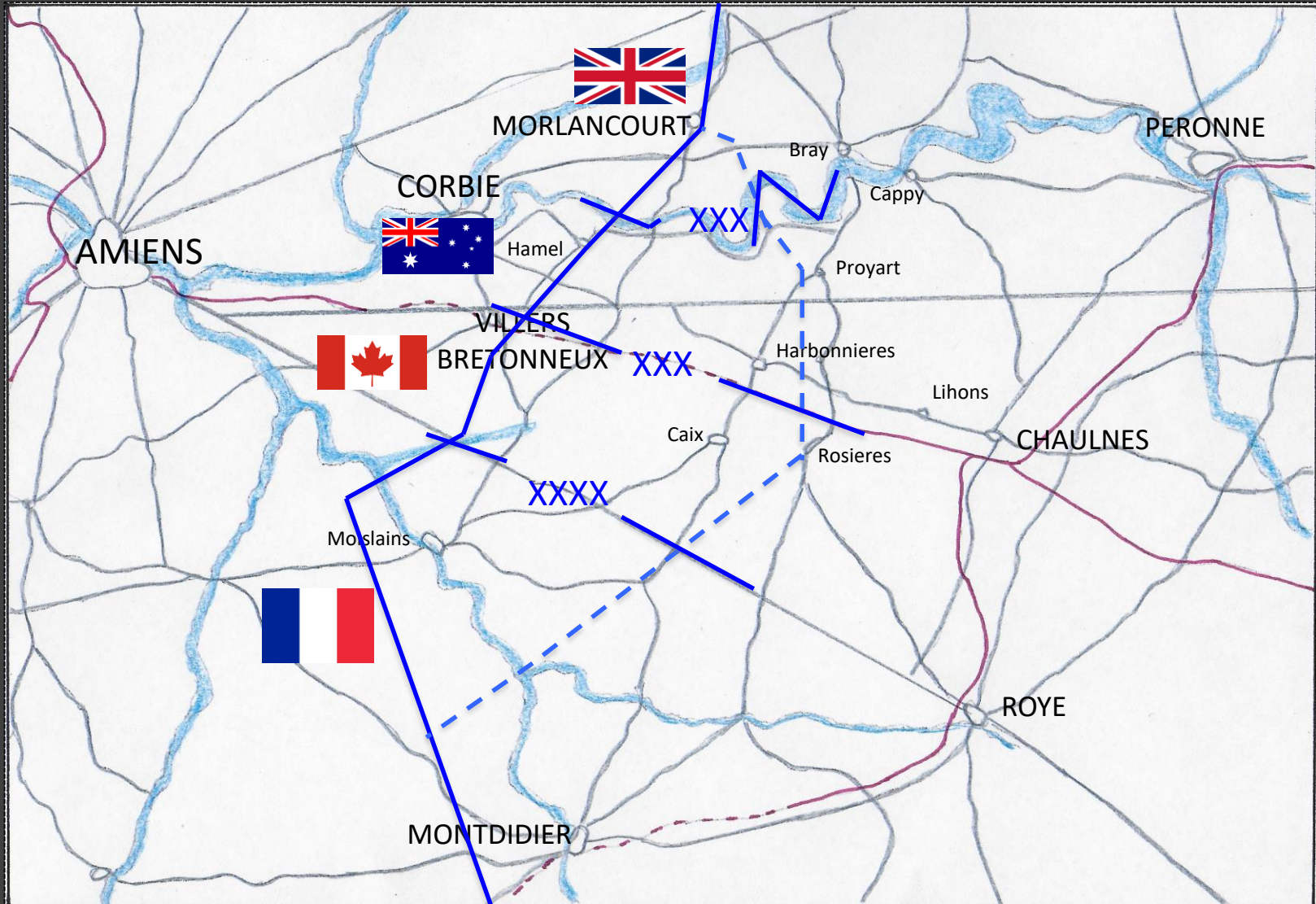
(4)
GNEISENAU,
9-11 JUNE

(5)
MARNE
15 JULY - 9 AUGUST

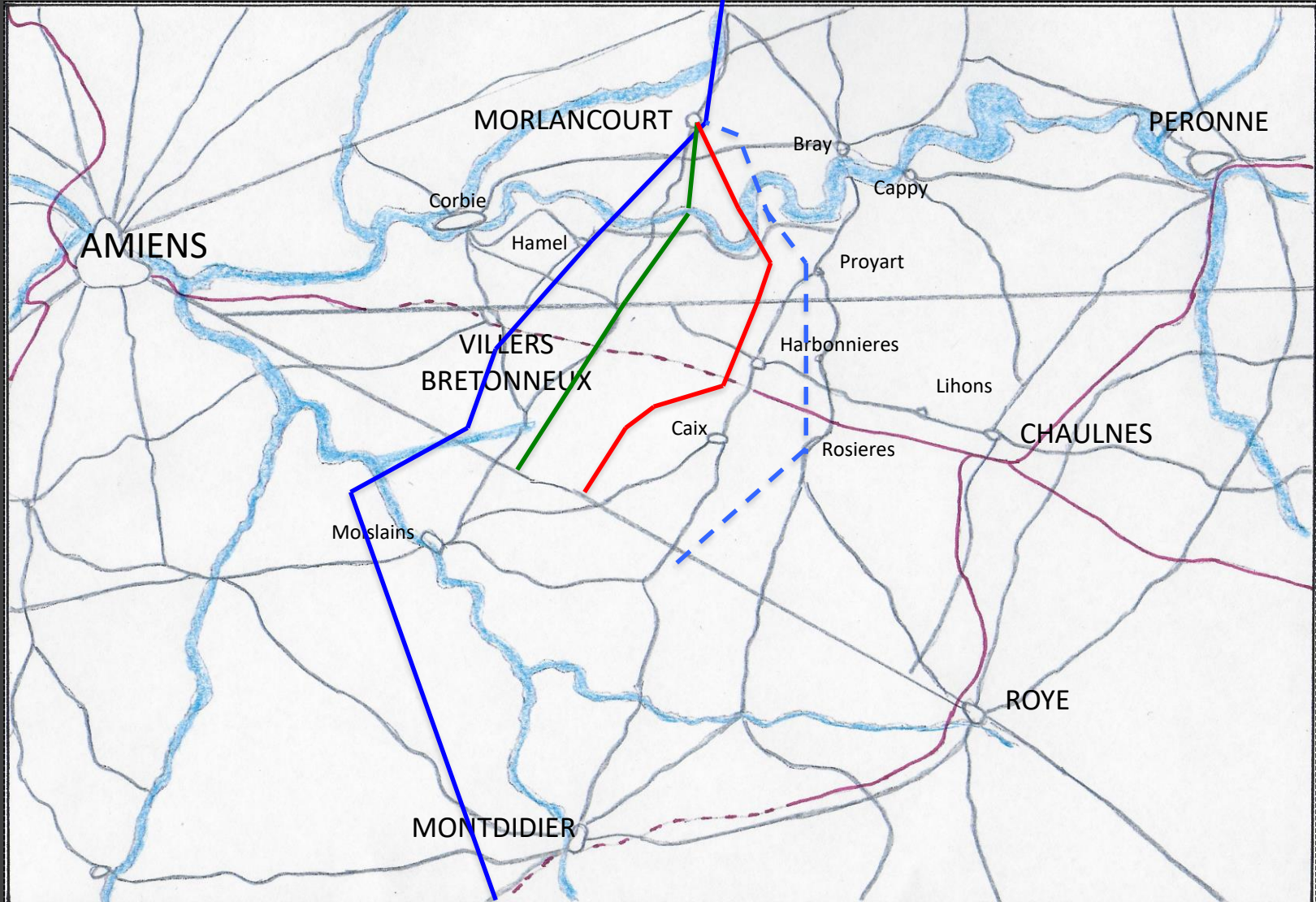
THE AMIENS AREA



4TH ARMY ATTACK PLAN



4TH ARMY OBJECTIVES



AUSTRALIAN CORPS ARTILLERY

FIELD: 18 FIELD ARTILLERY BRIGADES

ESTIMATED
GERMAN GUNS
AUST AND CDN
CORPS FRONT

13 PDR GUN	18 PDR GUN	4.5IN HOW	TOTAL
18	306	108	432

192

HEAVY: 10 HEAVY ARTILLERY BRIGADES + 5 BATTERIES

12-IN HOW	9.2-IN HOW	8-IN HOW	6-IN HOW	60 PDR GUN	6-IN GUN	12-IN GUN	TOTAL
2	20	30	124	48	16	3	243

116

FIELD ARTILLERY

FIELD ARTILLERY BARRAGE MAP

Issued under AUSTRALIAN CORPS BATTLE INSTRUCTIONS No. 1 dated 18/18 & " 2 " 28/18

Note: The Barrage Lifts as shown are being continued to the South by the CANADIAN CORPS

SECRET COPY NO. 17

710K+13	125 to 126	+47 to +51	+103 to +108
710K+14	126 to 127	+48 to +52	+104 to +109
710K+15	127 to 128	+49 to +53	+105 to +110
710K+16	128 to 129	+50 to +54	+106 to +111
710K+17	129 to 130	+51 to +55	+107 to +112
710K+18	130 to 131	+52 to +56	+108 to +113
710K+19	131 to 132	+53 to +57	+109 to +114
710K+20	132 to 133	+54 to +58	+110 to +115
710K+21	133 to 134	+55 to +59	+111 to +116
710K+22	134 to 135	+56 to +60	+112 to +117
710K+23	135 to 136	+57 to +61	+113 to +118
710K+24	136 to 137	+58 to +62	+114 to +119
710K+25	137 to 138	+59 to +63	+115 to +120
710K+26	138 to 139	+60 to +64	+116 to +121
710K+27	139 to 140	+61 to +65	+117 to +122
710K+28	140 to 141	+62 to +66	+118 to +123
710K+29	141 to 142	+63 to +67	+119 to +124
710K+30	142 to 143	+64 to +68	+120 to +125
710K+31	143 to 144	+65 to +69	+121 to +126
710K+32	144 to 145	+66 to +70	+122 to +127
710K+33	145 to 146	+67 to +71	+123 to +128
710K+34	146 to 147	+68 to +72	+124 to +129
710K+35	147 to 148	+69 to +73	+125 to +130
710K+36	148 to 149	+70 to +74	+126 to +131
710K+37	149 to 150	+71 to +75	+127 to +132
710K+38	150 to 151	+72 to +76	+128 to +133
710K+39	151 to 152	+73 to +77	+129 to +134
710K+40	152 to 153	+74 to +78	+130 to +135
710K+41	153 to 154	+75 to +79	+131 to +136
710K+42	154 to 155	+76 to +80	+132 to +137
710K+43	155 to 156	+77 to +81	+133 to +138
710K+44	156 to 157	+78 to +82	+134 to +139
710K+45	157 to 158	+79 to +83	+135 to +140
710K+46	158 to 159	+80 to +84	+136 to +141
710K+47	159 to 160	+81 to +85	+137 to +142
710K+48	160 to 161	+82 to +86	+138 to +143
710K+49	161 to 162	+83 to +87	+139 to +144
710K+50	162 to 163	+84 to +88	+140 to +145
710K+51	163 to 164	+85 to +89	+141 to +146
710K+52	164 to 165	+86 to +90	+142 to +147
710K+53	165 to 166	+87 to +91	+143 to +148
710K+54	166 to 167	+88 to +92	+144 to +149
710K+55	167 to 168	+89 to +93	+145 to +150
710K+56	168 to 169	+90 to +94	+146 to +151
710K+57	169 to 170	+91 to +95	+147 to +152
710K+58	170 to 171	+92 to +96	+148 to +153
710K+59	171 to 172	+93 to +97	+149 to +154
710K+60	172 to 173	+94 to +98	+150 to +155
710K+61	173 to 174	+95 to +99	+151 to +156
710K+62	174 to 175	+96 to +100	+152 to +157
710K+63	175 to 176	+97 to +101	+153 to +158
710K+64	176 to 177	+98 to +102	+154 to +159
710K+65	177 to 178	+99 to +103	+155 to +160
710K+66	178 to 179	+100 to +104	+156 to +161
710K+67	179 to 180	+101 to +105	+157 to +162
710K+68	180 to 181	+102 to +106	+158 to +163
710K+69	181 to 182	+103 to +107	+159 to +164
710K+70	182 to 183	+104 to +108	+160 to +165
710K+71	183 to 184	+105 to +109	+161 to +166
710K+72	184 to 185	+106 to +110	+162 to +167
710K+73	185 to 186	+107 to +111	+163 to +168
710K+74	186 to 187	+108 to +112	+164 to +169
710K+75	187 to 188	+109 to +113	+165 to +170
710K+76	188 to 189	+110 to +114	+166 to +171
710K+77	189 to 190	+111 to +115	+167 to +172
710K+78	190 to 191	+112 to +116	+168 to +173
710K+79	191 to 192	+113 to +117	+169 to +174
710K+80	192 to 193	+114 to +118	+170 to +175
710K+81	193 to 194	+115 to +119	+171 to +176
710K+82	194 to 195	+116 to +120	+172 to +177
710K+83	195 to 196	+117 to +121	+173 to +178
710K+84	196 to 197	+118 to +122	+174 to +179
710K+85	197 to 198	+119 to +123	+175 to +180
710K+86	198 to 199	+120 to +124	+176 to +181
710K+87	199 to 200	+121 to +125	+177 to +182
710K+88	200 to 201	+122 to +126	+178 to +183
710K+89	201 to 202	+123 to +127	+179 to +184
710K+90	202 to 203	+124 to +128	+180 to +185
710K+91	203 to 204	+125 to +129	+181 to +186
710K+92	204 to 205	+126 to +130	+182 to +187
710K+93	205 to 206	+127 to +131	+183 to +188
710K+94	206 to 207	+128 to +132	+184 to +189
710K+95	207 to 208	+129 to +133	+185 to +190
710K+96	208 to 209	+130 to +134	+186 to +191
710K+97	209 to 210	+131 to +135	+187 to +192
710K+98	210 to 211	+132 to +136	+188 to +193
710K+99	211 to 212	+133 to +137	+189 to +194
710K+100	212 to 213	+134 to +138	+190 to +195
710K+101	213 to 214	+135 to +139	+191 to +196
710K+102	214 to 215	+136 to +140	+192 to +197
710K+103	215 to 216	+137 to +141	+193 to +198
710K+104	216 to 217	+138 to +142	+194 to +199
710K+105	217 to 218	+139 to +143	+195 to +200
710K+106	218 to 219	+140 to +144	+196 to +201
710K+107	219 to 220	+141 to +145	+197 to +202
710K+108	220 to 221	+142 to +146	+198 to +203
710K+109	221 to 222	+143 to +147	+199 to +204
710K+110	222 to 223	+144 to +148	+200 to +205
710K+111	223 to 224	+145 to +149	+201 to +206
710K+112	224 to 225	+146 to +150	+202 to +207
710K+113	225 to 226	+147 to +151	+203 to +208
710K+114	226 to 227	+148 to +152	+204 to +209
710K+115	227 to 228	+149 to +153	+205 to +210
710K+116	228 to 229	+150 to +154	+206 to +211
710K+117	229 to 230	+151 to +155	+207 to +212
710K+118	230 to 231	+152 to +156	+208 to +213
710K+119	231 to 232	+153 to +157	+209 to +214
710K+120	232 to 233	+154 to +158	+210 to +215
710K+121	233 to 234	+155 to +159	+211 to +216
710K+122	234 to 235	+156 to +160	+212 to +217
710K+123	235 to 236	+157 to +161	+213 to +218
710K+124	236 to 237	+158 to +162	+214 to +219
710K+125	237 to 238	+159 to +163	+215 to +220
710K+126	238 to 239	+160 to +164	+216 to +221
710K+127	239 to 240	+161 to +165	+217 to +222
710K+128	240 to 241	+162 to +166	+218 to +223
710K+129	241 to 242	+163 to +167	+219 to +224
710K+130	242 to 243	+164 to +168	+220 to +225
710K+131	243 to 244	+165 to +169	+221 to +226
710K+132	244 to 245	+166 to +170	+222 to +227
710K+133	245 to 246	+167 to +171	+223 to +228
710K+134	246 to 247	+168 to +172	+224 to +229
710K+135	247 to 248	+169 to +173	+225 to +230
710K+136	248 to 249	+170 to +174	+226 to +231
710K+137	249 to 250	+171 to +175	+227 to +232
710K+138	250 to 251	+172 to +176	+228 to +233
710K+139	251 to 252	+173 to +177	+229 to +234
710K+140	252 to 253	+174 to +178	+230 to +235
710K+141	253 to 254	+175 to +179	+231 to +236
710K+142	254 to 255	+176 to +180	+232 to +237
710K+143	255 to 256	+177 to +181	+233 to +238
710K+144	256 to 257	+178 to +182	+234 to +239
710K+145	257 to 258	+179 to +183	+235 to +240
710K+146	258 to 259	+180 to +184	+236 to +241
710K+147	259 to 260	+181 to +185	+237 to +242
710K+148	260 to 261	+182 to +186	+238 to +243
710K+149	261 to 262	+183 to +187	+239 to +244
710K+150	262 to 263	+184 to +188	+240 to +245
710K+151	263 to 264	+185 to +189	+241 to +246
710K+152	264 to 265	+186 to +190	+242 to +247
710K+153	265 to 266	+187 to +191	+243 to +248
710K+154	266 to 267	+188 to +192	+244 to +249
710K+155	267 to 268	+189 to +193	+245 to +250
710K+156	268 to 269	+190 to +194	+246 to +251
710K+157	269 to 270	+191 to +195	+247 to +252
710K+158	270 to 271	+192 to +196	+248 to +253
710K+159	271 to 272	+193 to +197	+249 to +254
710K+160	272 to 273	+194 to +198	+250 to +255
710K+161	273 to 274	+195 to +199	+251 to +256
710K+162	274 to 275	+196 to +200	+252 to +257
710K+163	275 to 276	+197 to +201	+253 to +258
710K+164	276 to 277	+198 to +202	+254 to +259
710K+165	277 to 278	+199 to +203	+255 to +260
710K+166	278 to 279	+200 to +204	+256 to +261
710K+167	279 to 280	+201 to +205	+257 to +262
710K+168	280 to 281	+202 to +206	+258 to +263
710K+169	281 to 282	+203 to +207	+259 to +264
710K+170	282 to 283	+204 to +208	+260 to +265
710K+171	283 to 284	+205 to +209	+261 to +266
710K+172	284 to 285	+206 to +210	+262 to +267
710K+173	285 to 286	+207 to +211	+263 to +268
710K+174	286 to 287	+208 to +212	+264 to +269
710K+175	287 to 288	+209 to +213	+265 to +270
710K+176	288 to 289	+210 to +214	+266 to +271
710K+177	289 to 290	+211 to +215	+267 to +272
710K+178	290 to 291	+212 to +216	+268 to +273
710K+179	291 to 292	+213 to +217	+269 to +274
710K+180	292 to 293	+214 to +218	+270 to +275
710K+181	293 to 294	+215 to +219	+271 to +276
710K+182	294 to 295	+216 to +220	+272 to +277
710K+183	295 to 296	+217 to +221	+273 to +278
710K+184	296 to 297	+218 to +222	+274 to +279
710K+185	297 to 298	+219 to +223	+275 to +280
710K+186	298 to 299	+220 to +224	+276 to +281
710K+187	299 to 300	+221 to +225	+277 to +282
710K+188	300 to 301	+222 to +226	+278 to +283
710K+189	301 to 302	+223 to +227	+279 to +284
710K+190	302 to 303	+224 to +228	+280 to +285
710K+191	303 to 304	+225 to +229	+281 to +286
710K+192	304 to 305	+226 to +230	+282 to +287
710K+193	305 to 306	+227 to +231	+283 to +288
710K+194	306 to 307	+228 to +232	+284 to +289
710K+195	307 to 308	+229 to +233	+285 to +290
710K+196	308 to 309	+230 to +234	+286 to +291
710K+197	309 to 310	+231 to +235	+287 to +292
710K+198	310 to 311	+232 to +236	+288 to +293
710K+199	311 to 312	+233 to +237	+289 to +294
710K+200	312 to 313	+234 to +238	+290 to +295

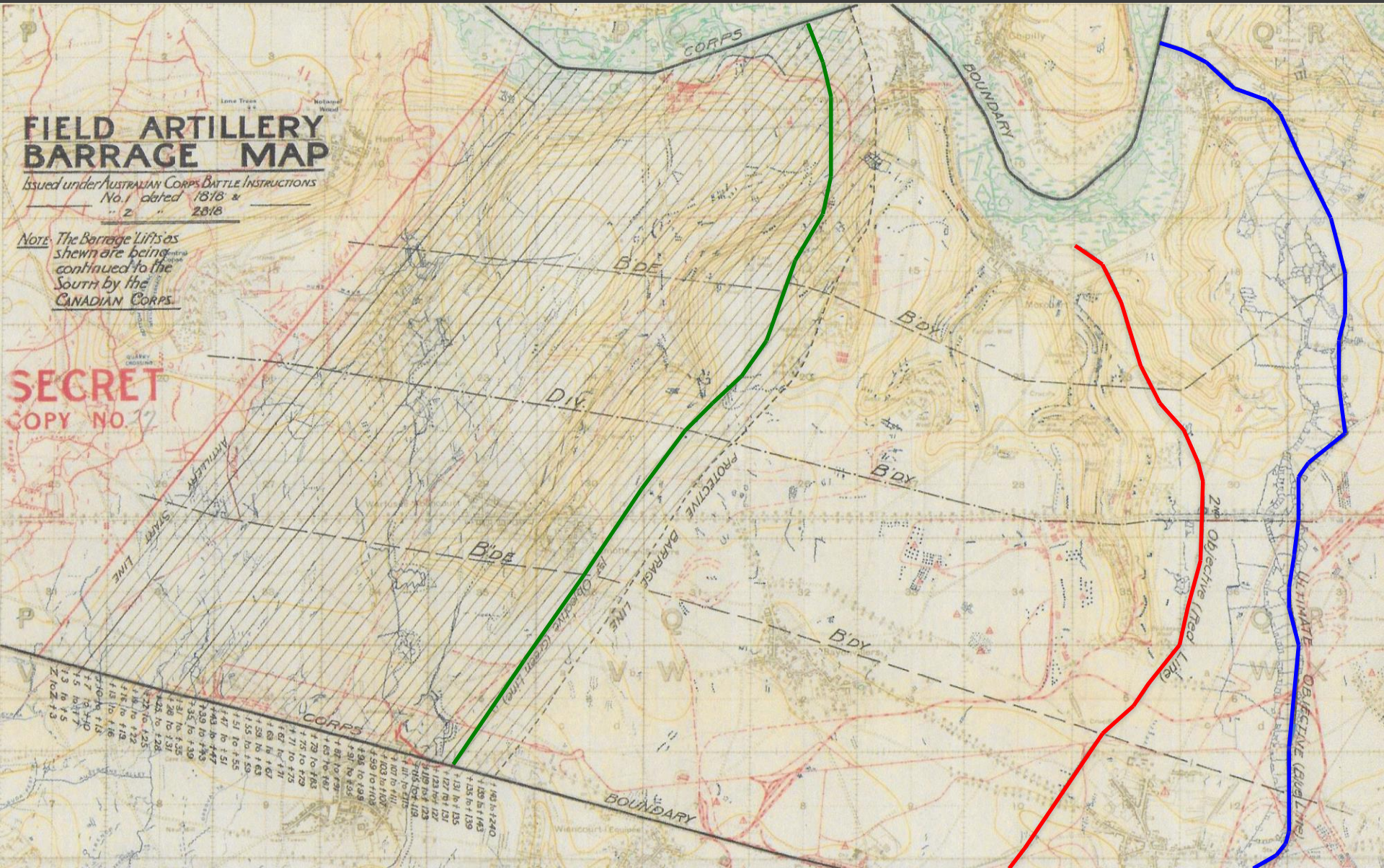
FIELD ARTILLERY

FIELD ARTILLERY BARRAGE MAP

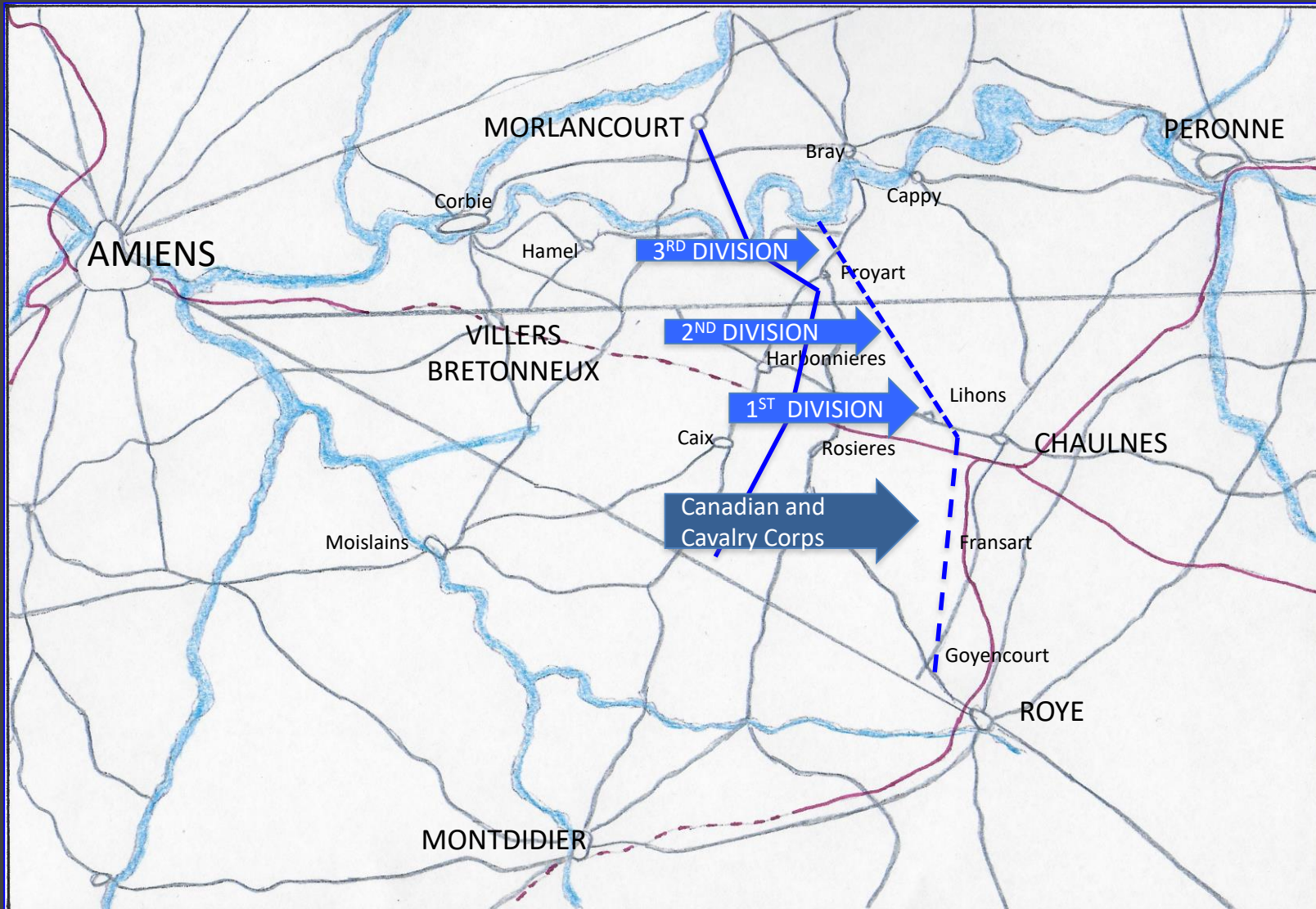
Issued under AUSTRALIAN CORPS BATTLE INSTRUCTIONS No. 1 dated 18/18 & " 2 " 28/18

Note: The Barrage Lifts as shown are being continued to the South by the CANADIAN CORPS.

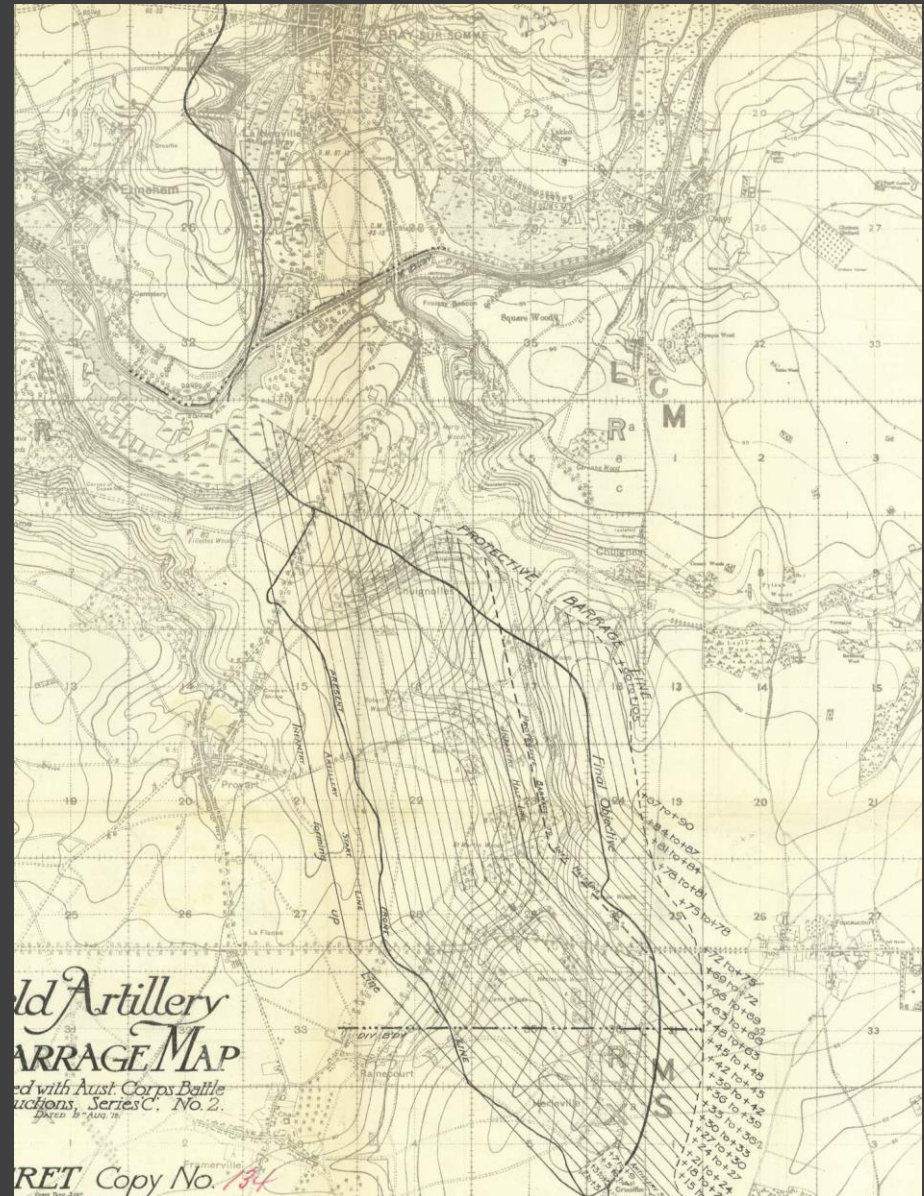
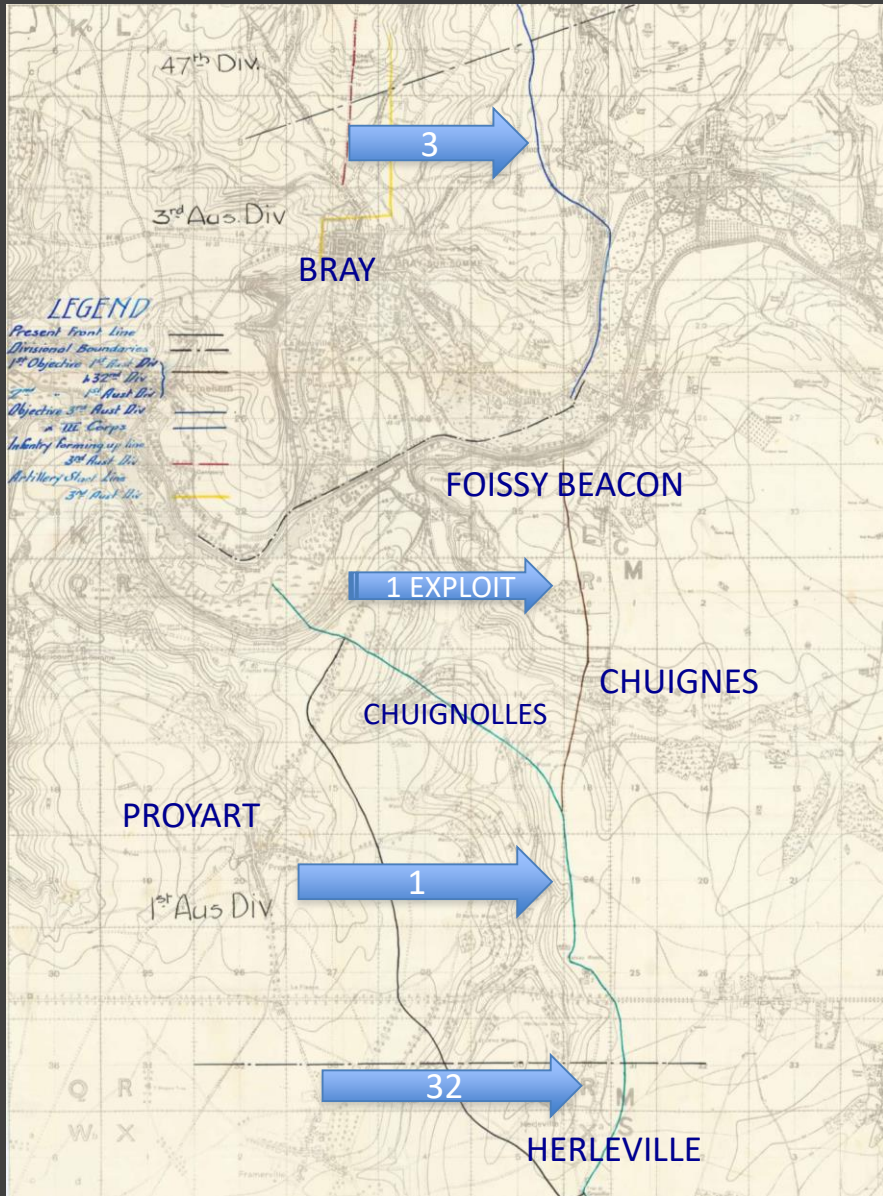
SECRET COPY NO. 17



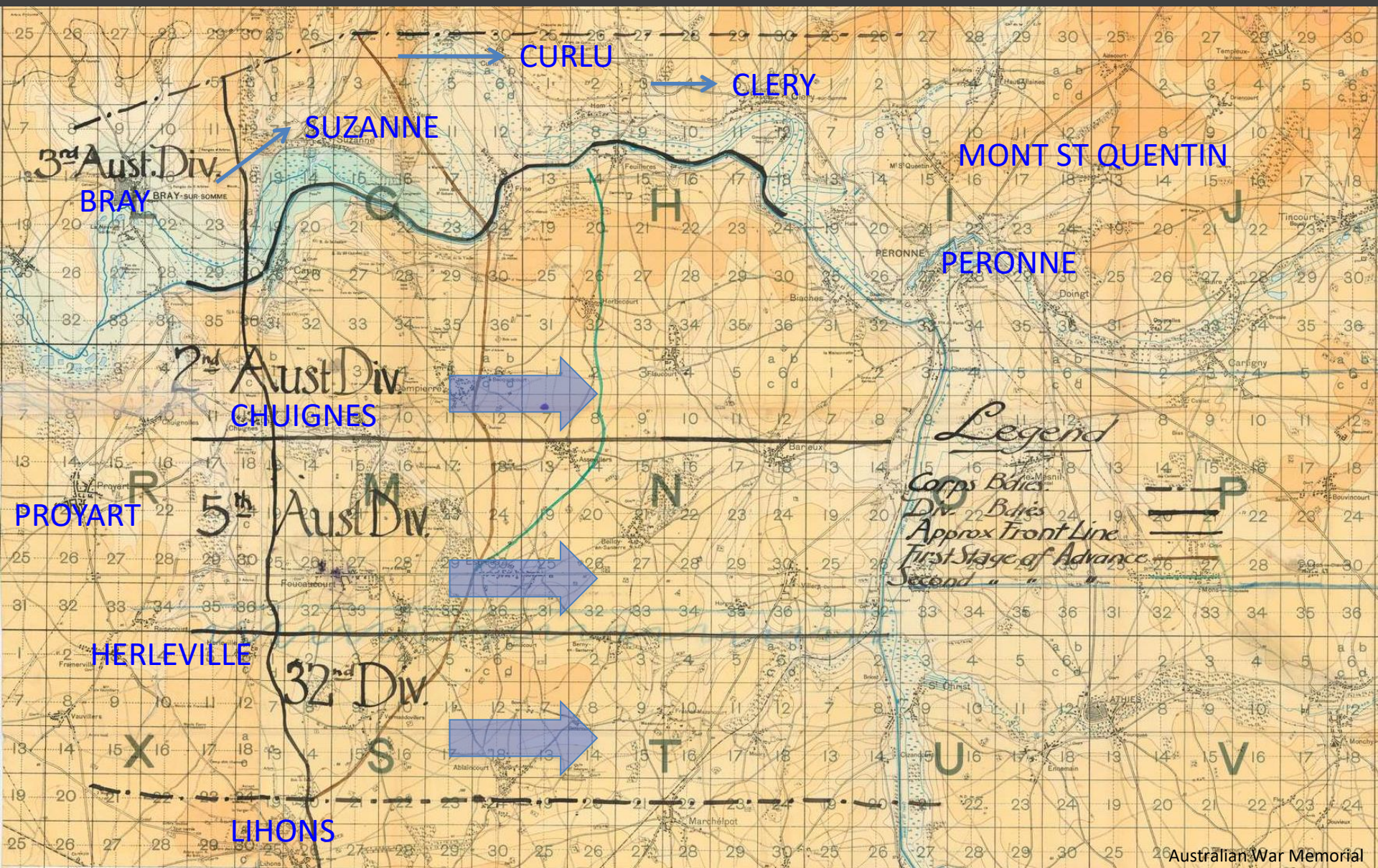
CONTINUATION ATTACKS 9-11 AUGUST

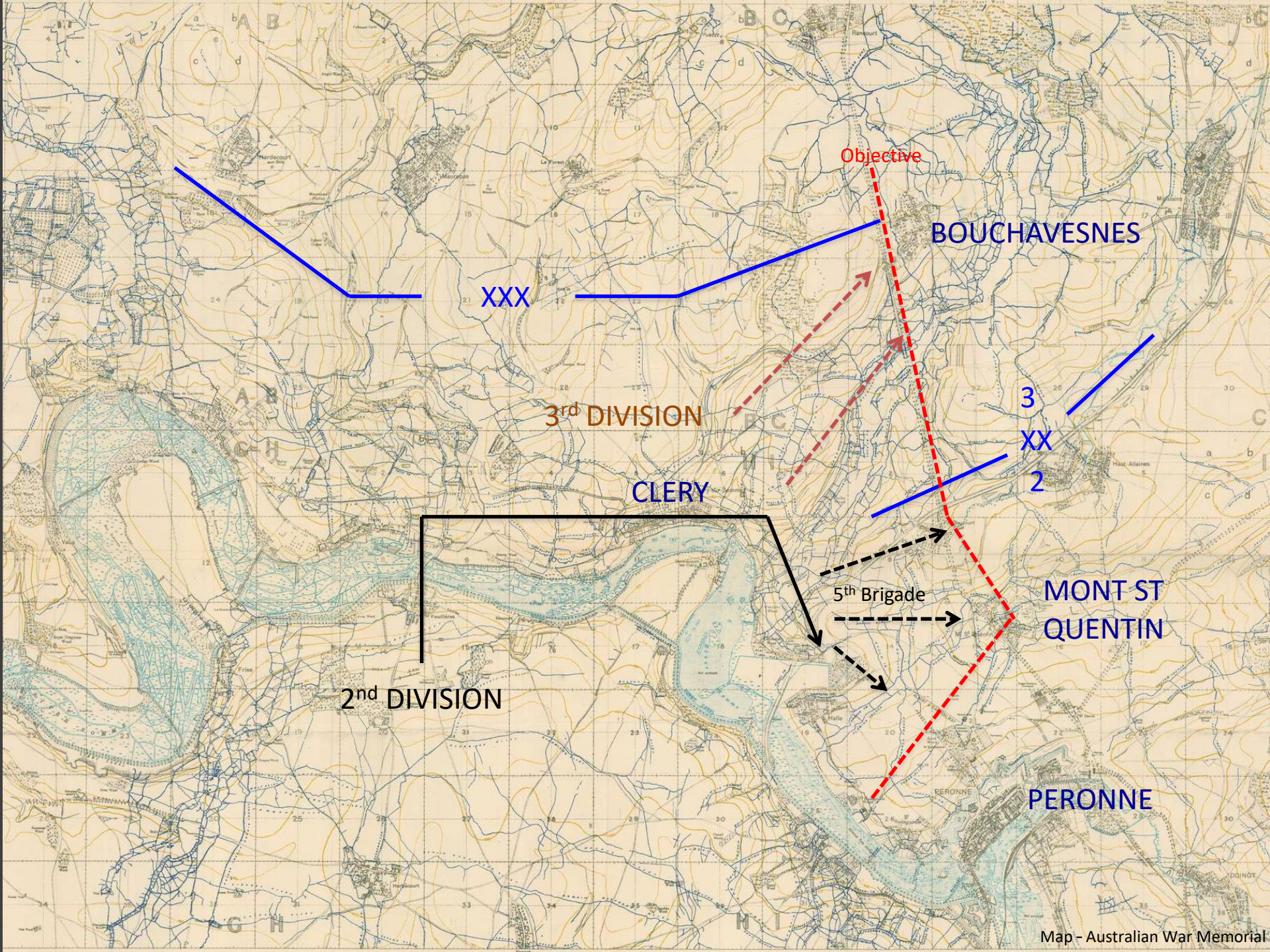


ATTACKS 22 - 25 AUGUST



MOBILE WARFARE, 26 - 30 AUGUST





XXX

3rd DIVISION

CLERY

2nd DIVISION

Objective

BOUCHAVESNES

3

XX

2

5th Brigade

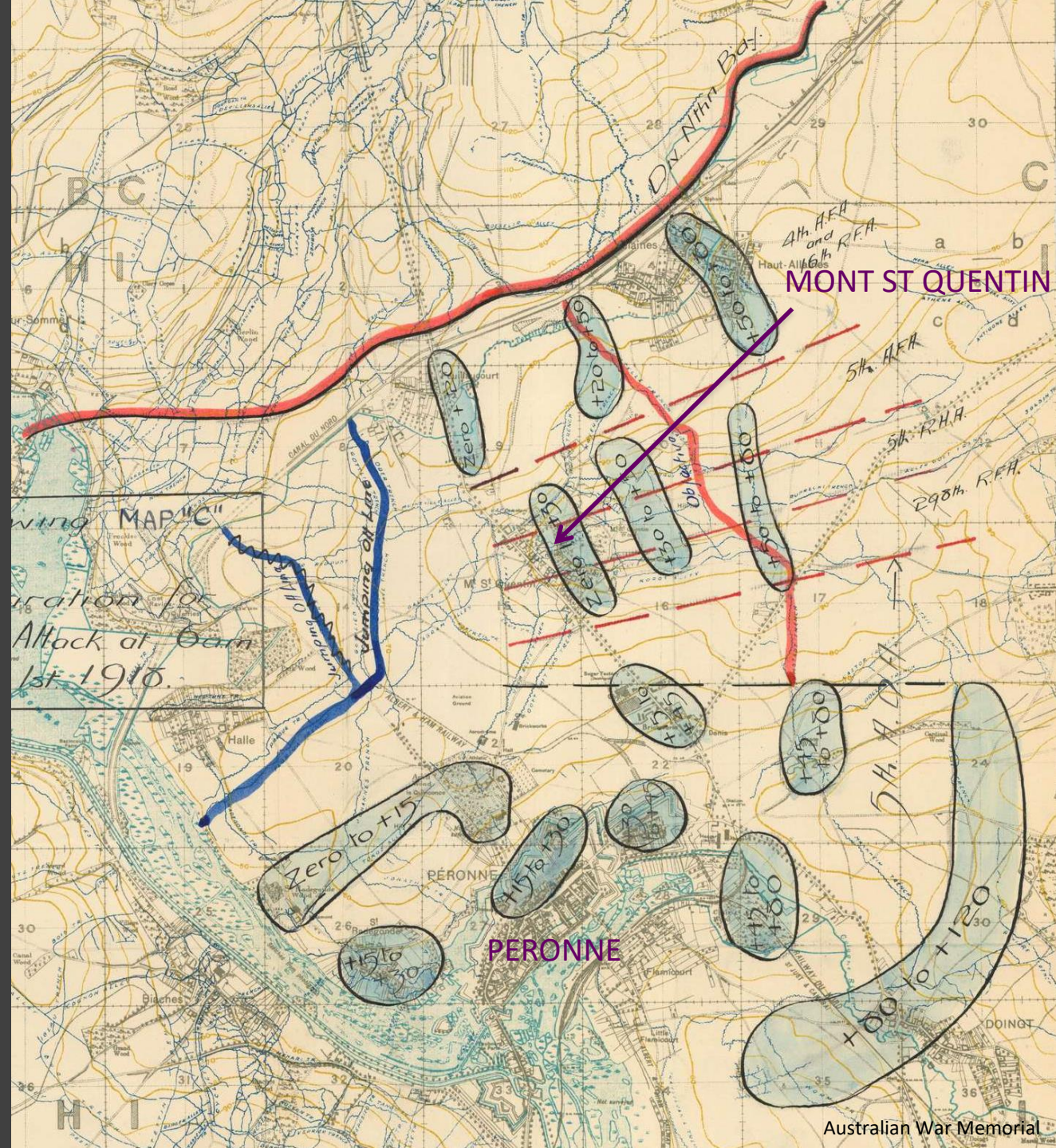
MONT ST
QUENTIN

PERONNE

FIRE PLAN

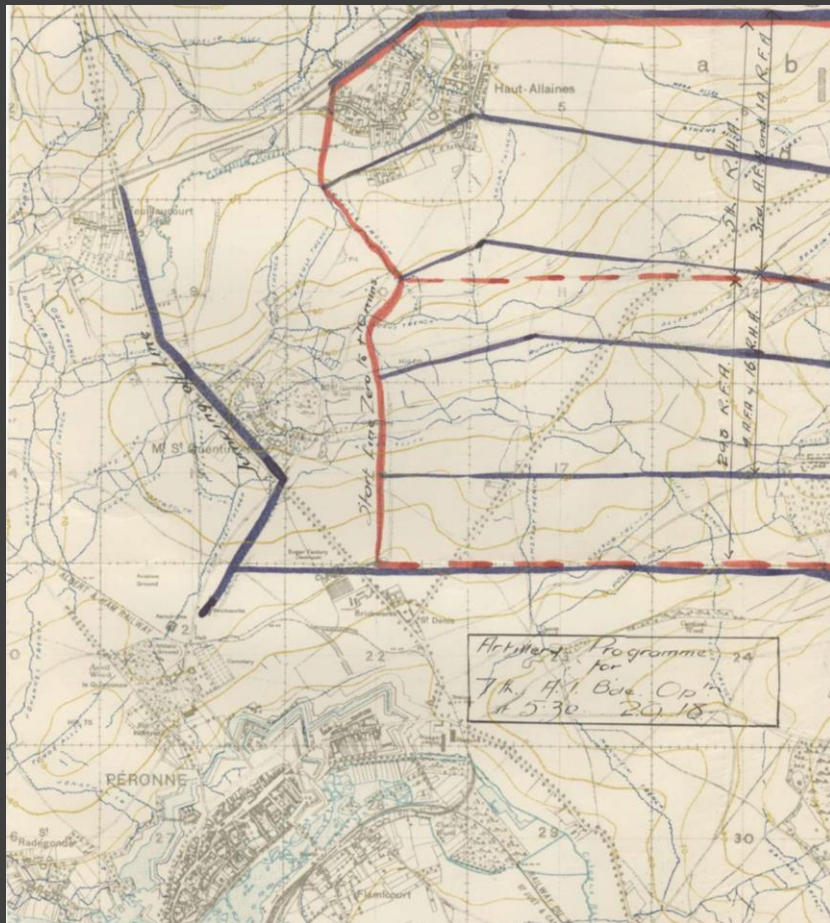
2nd AND 5th
DIVISIONS

1 SEPTEMBER

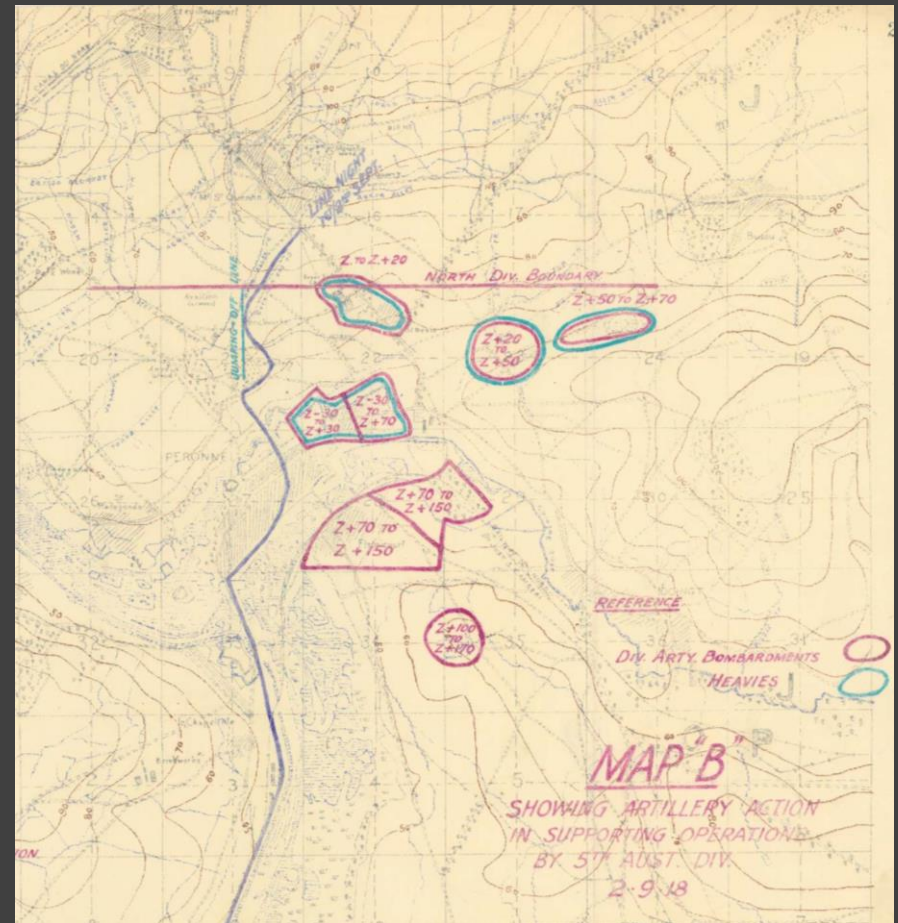


FIRE PLANS 2 SEPTEMBER

2ND DIVISION

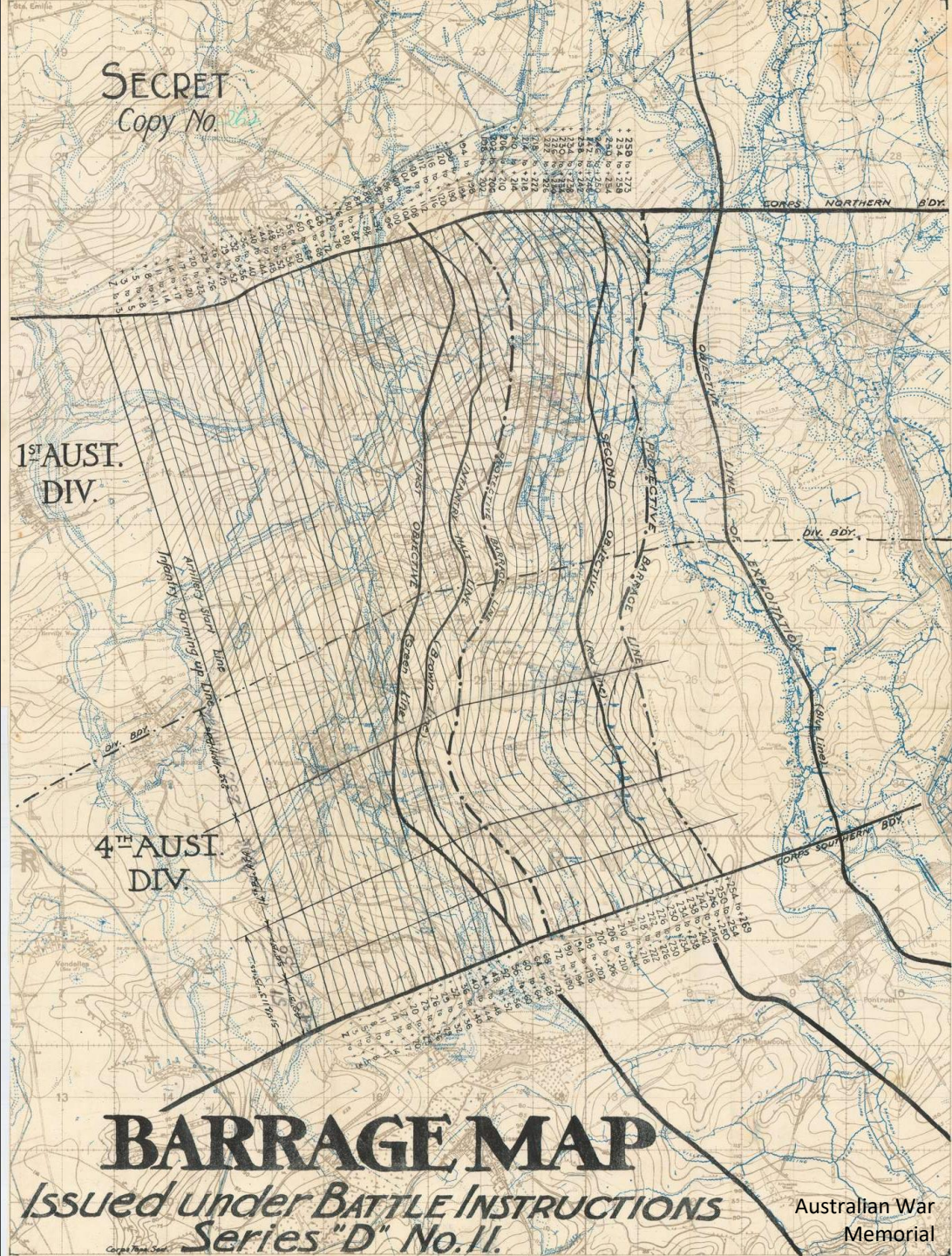


5TH DIVISION



CREEPING BARRAGE

HINDENBURG OUTPOST LINE





BRUCHMÜLLER'S ATTACK SUCCESS FACTORS

SURPRISE, through:

- Concealment of intention and preparations
- Complete abandonment of registration
- Simultaneous opening of fire
- A short artillery preparation

SUPPRESSION, through:

- Massed employment of the artillery
- Abandonment of the concept of destruction
- Heavy and constant counter battery fire
- A creeping barrage and escort batteries

EFFECT IN DEPTH, through:

- Long range guns
- Deployment of own batteries as far forward as possible

PREPARATION OF OWN TROOPS, through:

- Centralization of command
- Thorough briefing of infantry and artillery